



Collection of parasitoids found within the nests of *Delta dimidiatipenne*



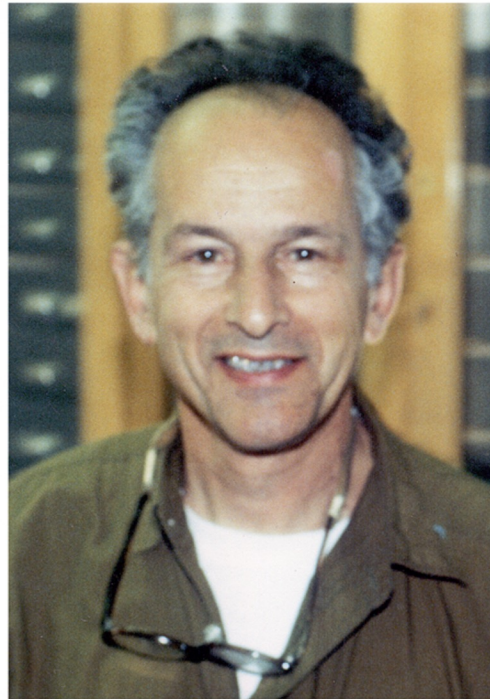
אוניברסיטת בן-גוריון בנגב
Ben-Gurion University
of the Negev



– Alfred Daniel J, Tennessee State University, The US
& Prof. Michal Segoli, Ben Gurion University, Israel

November 4th 2023, Maryland, National Harbour

Dedication



**Prof. Dan Gerling
(1936—2016)**

In loving memory of Prof. Dan Gerling – Collector-Curator-Naturalist

Animal Behaviour 188 (2022) 99–109

Contents lists available at [ScienceDirect](#)

Animal Behaviour

journal homepage: www.elsevier.com/locate/anbehav

**SCIENTIFIC
REPORTS**

natureresearch

Check for updates

OPEN

Frequency and consequences of the collection of already parasitized caterpillars by a potter wasp

Michal Segoli¹, Sarah Leduc¹, Fengqun Meng¹, Ishai Hoffmann¹, Miriam Kishinevsky² & Tamir Rozenberg¹

Nest provisioning with parasitized caterpillars by female potter wasps: costs and potential mechanisms

Sarah Leduc, Tamir Rosenberg, Alfred Daniel Johnson[✉], Michal Segoli[✉]

Mitrani Department of Desert Ecology, Blaustein Institute for Desert Research, Ben Gurion University of the Negev, Sede Boqer, Israel

Where we do what we do ?



*Israel's Negev and Judean Deserts during 2021–22.
11 field sites in total*

We look for water holes

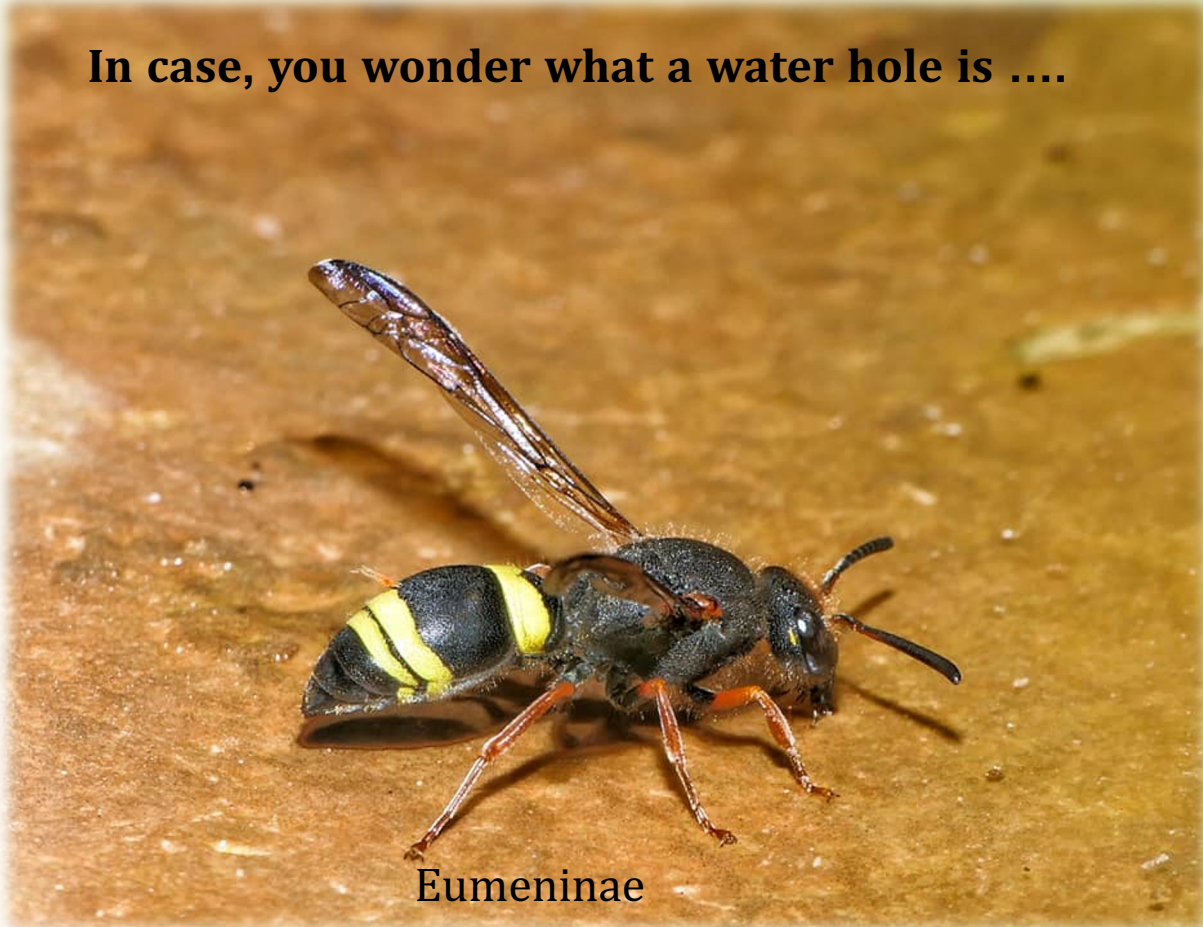


Gev Amin, Negev Desert of Israel

In case, you wonder what a water hole is



Vespa sp.



Eumeninae



Delta dimidiatipenne



Chlorion sp.



Bucanetes githagineus



Emberiza hortulana

What we do ?



Delta dimidiatipenne normally build nests under rock ledges and in concealed rock surfaces



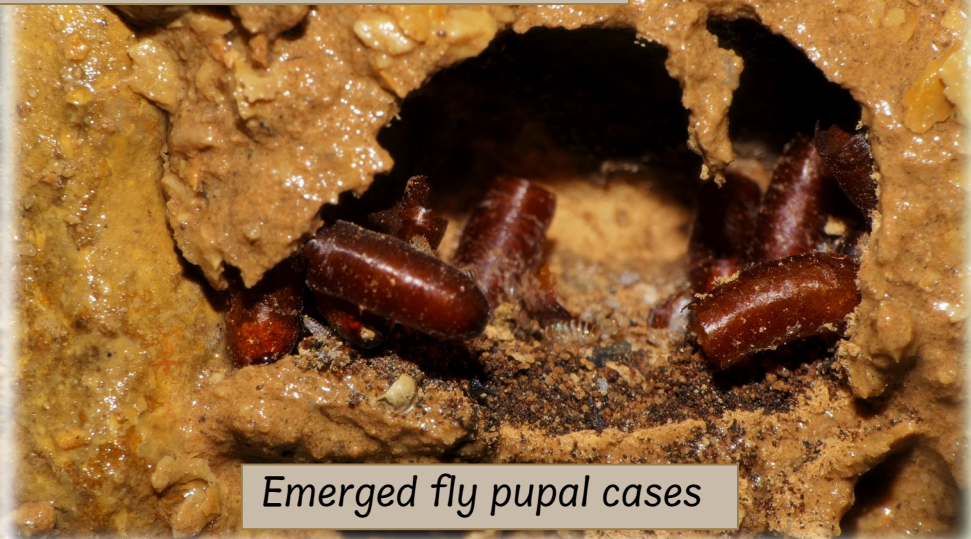
We opened the cells by carefully dampening them with water and open using forceps and collecting all the parasitoids within



What is waiting for us when we break open the nest



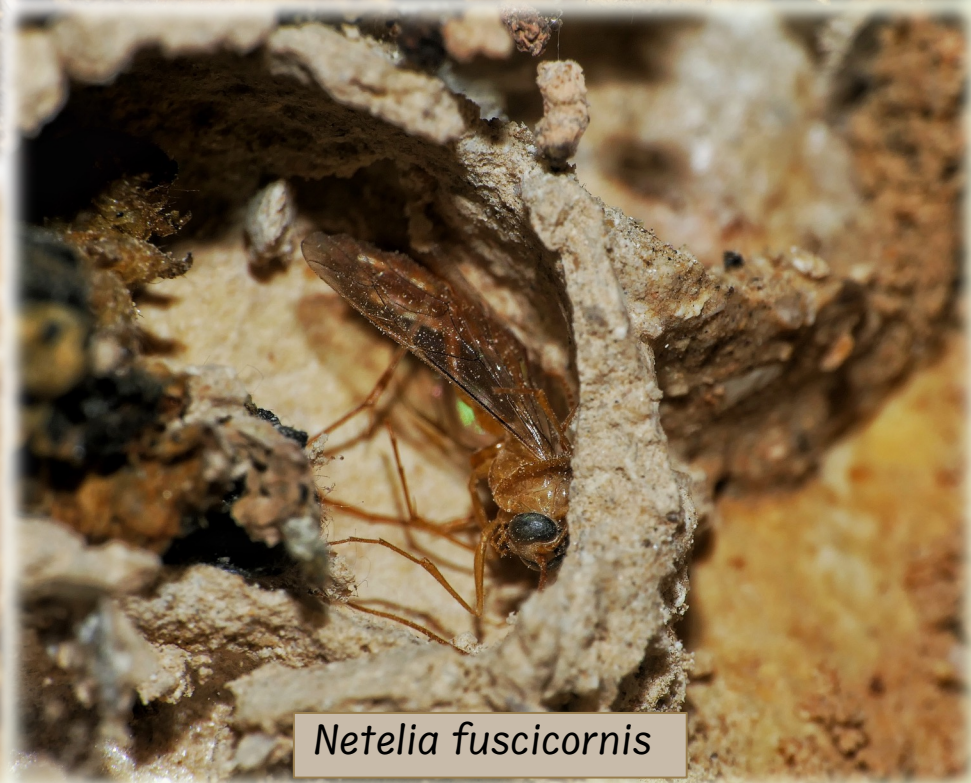
Copidosoma primulum infested caterpillars and an *D. dimidiatipenne*



Emerged fly pupal cases



Miltogramminae



Netelia fuscicornis

Recorded Parasitoids

Parasitoids of prey caterpillar

Parasitoids of pttter wasp larva

Netelia fuscicornis

Barylypa rufa

Ophion similis

Cotesia vanessae

Microplitis sp.

Schoenlandella deserta

Chelonus sp.

Rogas sp.

Phanerotoma sp.

Copidosoma primulum

Tachindae

Monodontomerus sp

Miltogramminae

Melittobia acasta

Stilbum sp.

Future Thrust

- *Future research based on host-parasitoid rearing can shed more light on factors causing different parasitoid species' emergence failure, their developmental nutritional requirements, and their ability to break open the nest successfully.*

Thank You